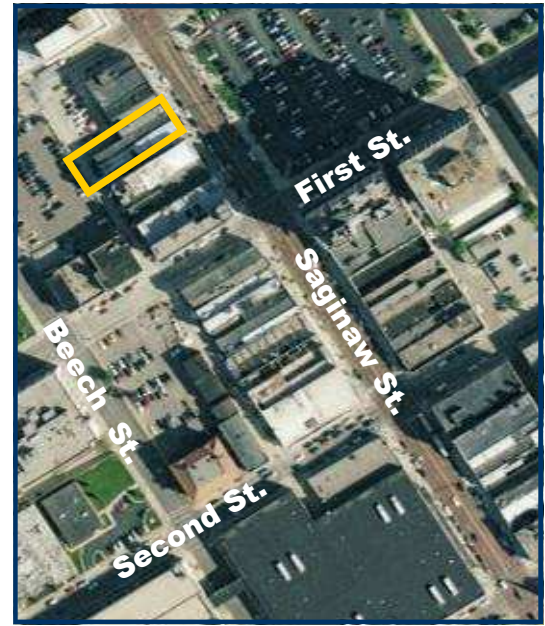


Economy Building - 1,254 Square Feet, Ground Floor



Restaurant/Retail Space

Central Downtown Location: S. Saginaw Street between First and Second Street, near the U of M - Flint University Pavilion.



DEMOGRAPHICS:	1 Mile	3 Mile	5 Mile
Population:	8,912	107,522	192,638
Households:	3,842	42,754	76,312
Average HH Income:	\$31,795	\$40,333	\$42,371
Other:			

Daytime Downtown Population: Over 5000 people
 Hospital Employment (Hurley and McLaren): Over 5,000 employees
 Total Student Enrollment: Over 25,000 (U of M-Flint, Kettering, MCC)
 Over 5 Million people located in Greater Genesee County

Data has been obtained through various reliable sources, including the US Census. However, Uptown Developments, LLC provides no guarantee, expressed or implied, as to the accuracy, reliability or completeness of listed data.

GENERAL INFORMATION:

County: Genesee
 City: Flint
 Proposed Use: Retail/Office
 Class of Space: A
 Zoning: D4 (Metropolitan District)
 Road Type: 4 Lane
 Building # of Stories: 3 Level
 Building Type: Renovation
 Parking: Over 1000 spaces in two-block radius

Renaissance Zone Location:

Abatement of single business tax, personal property tax and real estate tax.



Economy Building - Floor Plan



Contact:

Scott Whipple

or
Ridgway White

503 S. Saginaw Street
Flint, MI 48503

Phone: 810.238.5555

[Www.uptowndevelopments.com](http://www.uptowndevelopments.com)

