

The Rowe Building - 540 S. Saginaw Street, Flint, MI

Prime Downtown Office/Retail/Restaurant Space (TAX FREE ZONE)

SPACE FOR LEASE

14,311 Total SF
 Ground Floor Space
 7,925 SF South Side
 6,386 SF North Side

Central Downtown Location:

On S. Saginaw Street between First and Second Street, near the U of M - Flint University Pavilion.

Contact:

Scott Whipple
 or
 Ridgway White

810.238.5555

Uptown Developments, LLC
 503 S. Saginaw Street
 Flint, MI 48503

www.uptowndevelopments.com



DEMOGRAPHICS:

	1 Mile	3 Mile	5 Mile
Population:	8,912	107,522	192,638
Households:	3,842	42,754	76,312
Average HH Income:	\$31,795	\$40,333	\$42,371

Daytime Downtown Population: Over 5000 people
 Hospital Employment (Hurley and McLaren): Over 5,000 employees
 Total Student Enrollment: Over 25,000 (U of M-Flint, Kettering, MCC)

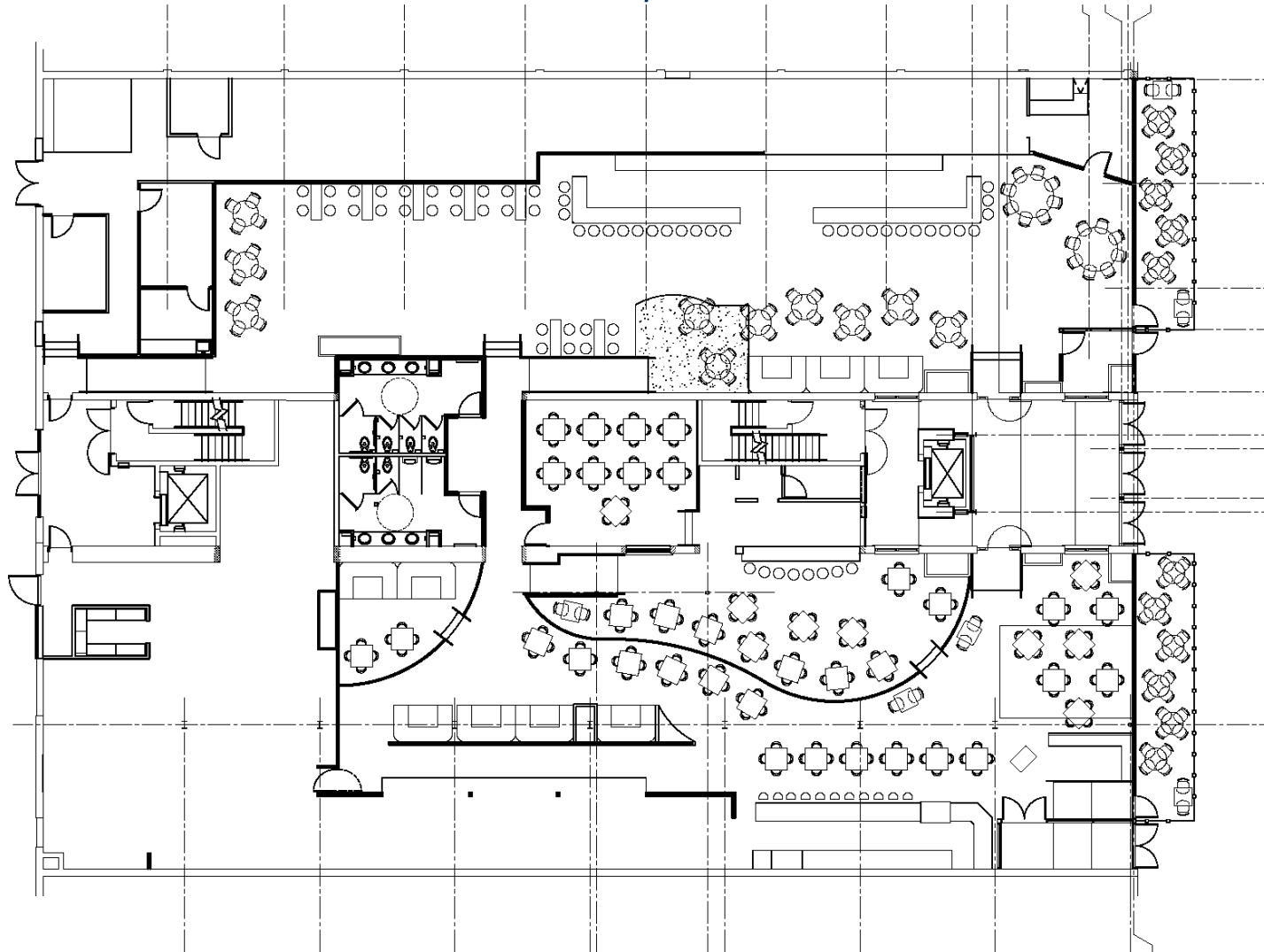


Data has been obtained through various reliable sources, including the US Census. However, Uptown Developments, LLC provides no guarantee, expressed or implied, as to the accuracy, reliability or completeness of listed data.

The Rowe Building - 540 S. Saginaw Street, Flint, MI

Prime Downtown Office/Retail/Restaurant Space (TAX FREE ZONE)

North Side: 6,386 Total SF



South Side: 7,925 Total SF

Saginaw Street

The Rowe Building - 540 S. Saginaw Street, Flint, MI

Prime Downtown Office/Retail/Restaurant Space (TAX FREE ZONE)

Additional Photos:

